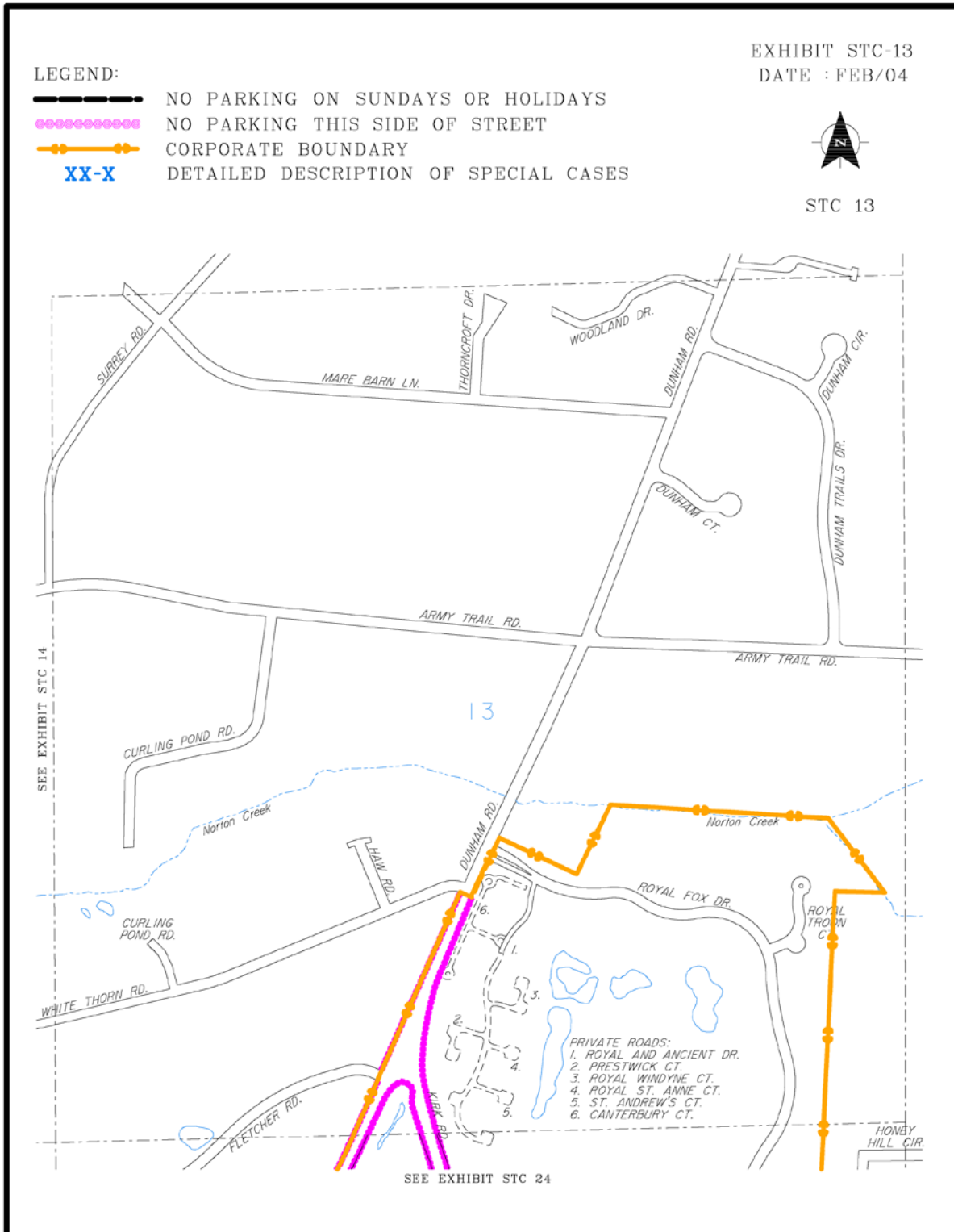
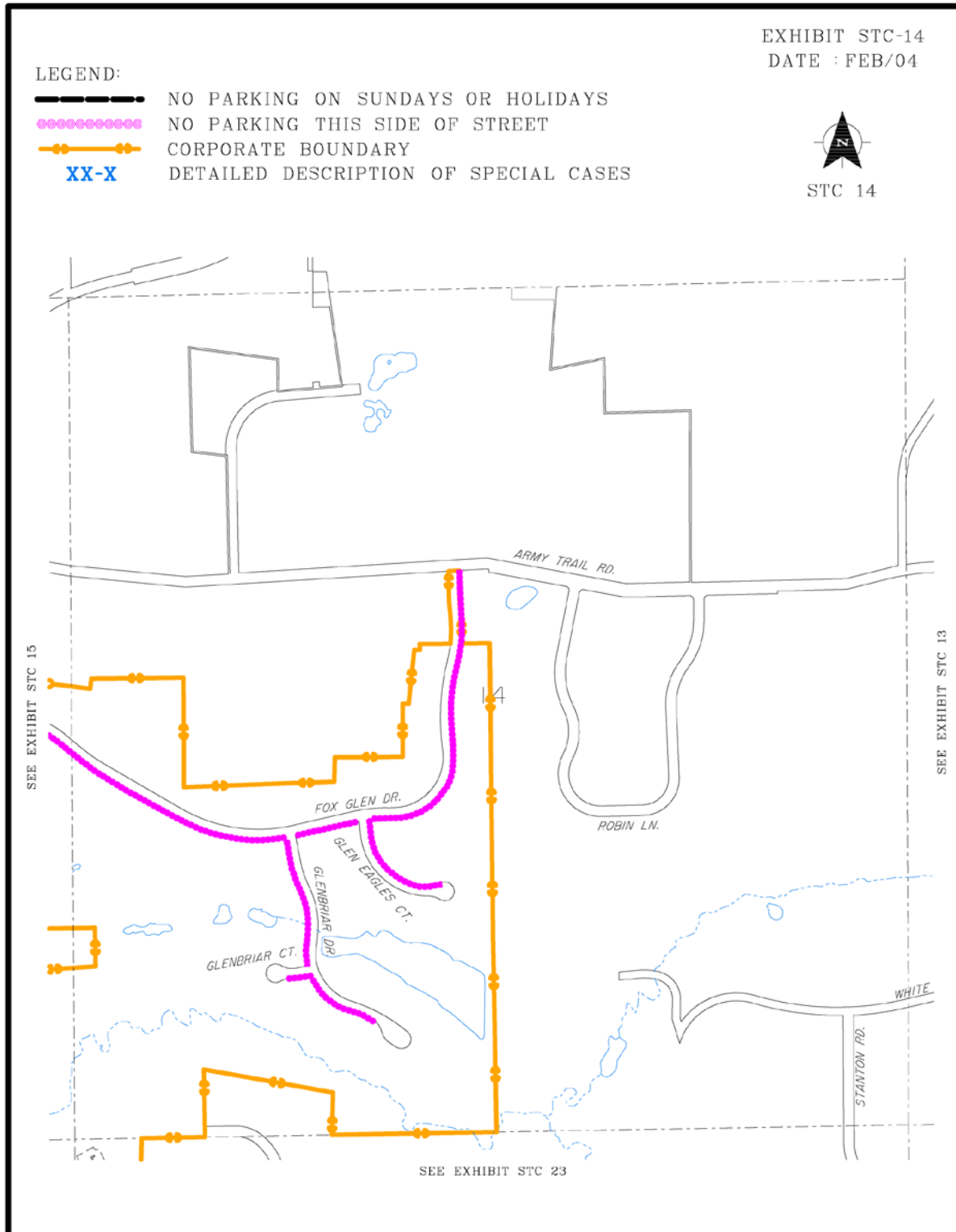


STOPPING, STANDING AND PARKING



(Ord. 2004-M-17 § 1; Ord. 2000-M-68 § 1; Ord. 1996-M-21 § 1; 1994-M-23 § 1.)

STOPPING, STANDING AND PARKING






(Ord. 2004-M-17 § 1; Ord. 2000-M-68 § 1; Ord. 1996-M-21 § 1; 1994-M-23 § 1.)

STOPPING, STANDING AND PARKING

EXHIBIT STC-15

DATE : 09/03

LEGEND:

-  NO PARKING ON SUNDAYS OR HOLIDAYS
-  NO PARKING THIS SIDE OF STREET
-  CORPORATE BOUNDARY
- 27-7** EXHIBIT - SECTION AND NUMBER



SECTION 15







(Ord. 2004-M-17 § 1; Ord. 2001-M-48 § 1; Ord. 2000-M-68 § 1; Ord. 1996-M-21 § 1; 1994-M-23 § 1.)

STOPPING, STANDING AND PARKING

EXHIBIT STC-16

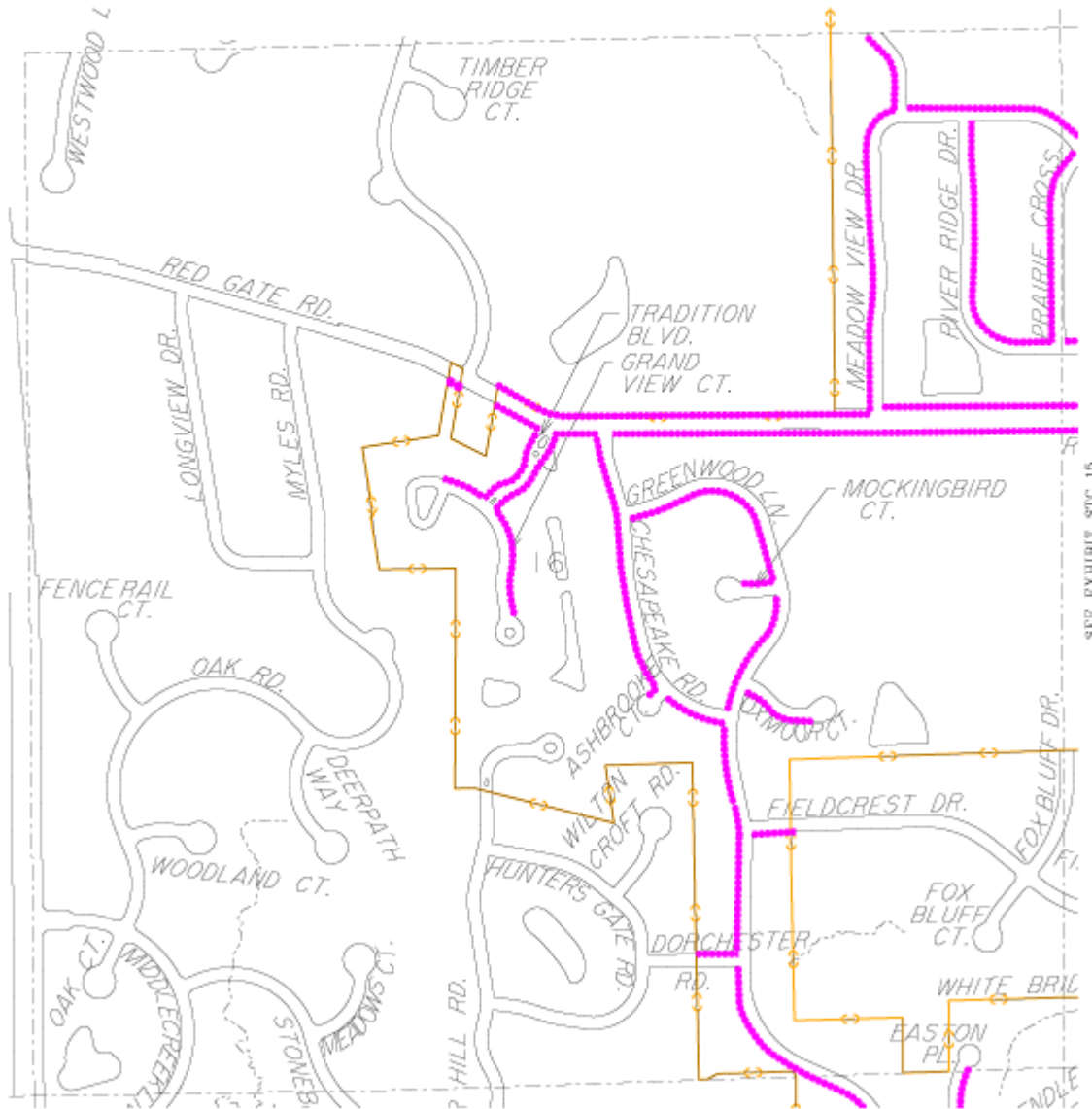
DATE : 09/03

LEGEND:

-  NO PARKING ON SUNDAYS OR HOLIDAYS
-  NO PARKING THIS SIDE OF STREET
-  CORPORATE BOUNDARY
-  27-7 EXHIBIT - SECTION AND NUMBER



SECTION 16



(Ord. 2004-M-17 § 1; Ord. 2001-M-48 § 1; Ord. 2000-M-68 § 1; Ord. 1996-M-21 § 1; 1994-M-23 § 1.)